

BROWNFIELD



COMMUNITY
SCHOOL

ANNUAL EDUCATION RESULTS REPORT 2024



Clearview
Public Schools

BROWNFIELD COMMUNITY SCHOOL ANNUAL EDUCATION RESULTS REPORT

PURPOSE: as part of Alberta's Assurance Framework, Schools must report results from the previous school year to the public. The report includes data from the survey students, parents, and staff complete each spring, Provincial Achievement Test (PAT) scores, and other local measures (such as school testing).



CLEARVIEW AND BROWNFIELD'S EDUCATION PLAN GOALS

Clearview Public Schools and Brownfield Community School set three focus areas for the previous year.

- 1) Literacy Goal
- 2) Numeracy Goal
- 3) Student Engagement Goal

BROWNFIELD'S EDUCATION PLAN

CLEARVIEW'S EDUCATION PLAN



BCS AERR 2024

BROWNFIELD COMMUNITY SCHOOL

We are a resilient rural school within a dynamic farming, oil & gas, and business oriented community! We are a K-9 school with a close knit, caring and engaged culture. Our students are known for their high academic achievement and excellence in athletics! We have 45 students in Start Right Play School to Grade 9.



MISSION

Working together to provide quality education in a caring environment.



BCS - PROGRAM HIGHLIGHTS

- Start-Right Pre-K Program
- Kindergarten to Grade 9
- Four-Day School Week
- Year over Year, Excellent Academic Performance
- Arts Programming - Art, Music, Drama
- Daily Physical Education
- Outdoor Education, Home Economics and Shop Programs
- Student Leadership Opportunities
- Athletics Programs





STAY CONNECTED
www.brownfield.clearview.ab.ca
www.facebook.com/brownfieldcommunityschool
www.instagram.com/brownfieldcommunityschool
403-578-2247



RESULTS FROM ALBERTA EDUCATION ASSURANCE MEASURES (AEAMs)

Each spring, parents, teachers, and students complete a survey about our school. The next few slides include key data from the surveys.

Additionally, students in grades 6 and 9 write Provincial Achievement Tests (PATs). The long-range data is shared here, too.

- Overall Summary Chart of all AEAMs
- PAT results (5-year rollouts)
- Citizenship Summary Chart
- Student Learning Engagement Summary Chart
- Welcoming, Caring, Respectful and Safe Learning Environment Summary Chart
- Access to Support Services Overall Summary Chart
- Parental Involvement Summary Chart
- Education Quality Summary Chart



AEAM - OVERALL SUMMARY

Fall 2024 Required Alberta Education Assurance Measures – Overall Summary

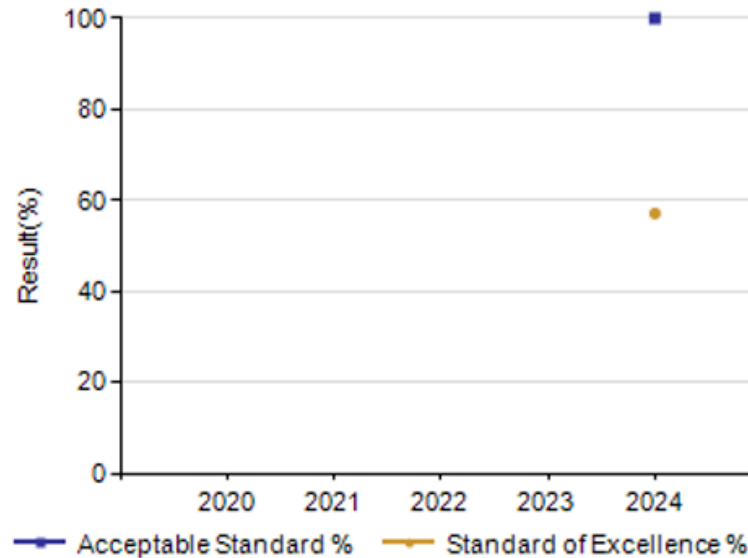
Assurance Domain	Measure	Brownfield Community School			Alberta			Measure Evaluation		
		Current Result	Prev Year Result	Prev 3 Year Average	Current Result	Prev Year Result	Prev 3 Year Average	Achievement	Improvement	Overall
Student Growth and Achievement	Student Learning Engagement	89.5	91.6	90.4	83.7	84.4	84.8	n/a	Maintained	n/a
	Citizenship	95.8	99.6	99.5	79.4	80.3	80.9	Very High	Declined	Good
	3-year High School Completion	n/a	n/a	n/a	80.4	80.7	82.4	n/a	n/a	n/a
	5-year High School Completion	n/a	n/a	n/a	88.1	88.6	87.3	n/a	n/a	n/a
	PAT6: Acceptable	100.0	*	n/a	68.5	66.2	66.2	Very High	n/a	n/a
	PAT6: Excellence	57.1	*	n/a	19.8	18.0	18.0	Very High	n/a	n/a
	PAT9: Acceptable	*	*	n/a	62.5	62.6	62.6	*	n/a	n/a
	PAT9: Excellence	*	*	n/a	15.4	15.5	15.5	*	n/a	n/a
	Diploma: Acceptable	n/a	n/a	n/a	81.5	80.3	80.3	n/a	n/a	n/a
	Diploma: Excellence	n/a	n/a	n/a	22.6	21.2	21.2	n/a	n/a	n/a
Teaching & Leading	Education Quality	96.5	96.0	96.0	87.6	88.1	88.6	Very High	Maintained	Excellent
Learning Supports	Welcoming, Caring, Respectful and Safe Learning Environments (WCRSLE)	95.2	98.7	99.3	84.0	84.7	85.4	n/a	Declined	n/a
	Access to Supports and Services	93.3	90.1	90.6	79.9	80.6	81.1	n/a	Maintained	n/a
Governance	Parental Involvement	100.0	100.0	97.8	79.5	79.1	78.9	Very High	Maintained	Excellent

AEAM - GRADE 6 PAT RESULTS

Provincial Achievement Test Results – Grade 6 PAT By Number Enrolled Measure History

Grade 6 PAT Results By Number Enrolled Measure History													
	Brownfield Community School					Measure Evaluation			Alberta				
	2020	2021	2022	2023	2024	Achievement	Improvement	Overall	2020	2021	2022	2023	2024
N	n/a	n/a	4	4	7	n/a	n/a	n/a	n/a	n/a	56,482	57,655	60,804
Acceptable Standard %	n/a	n/a	*	*	100.0	Very High	n/a	n/a	n/a	n/a	67.8	66.2	68.5
Standard of Excellence %	n/a	n/a	*	*	57.1	Very High	n/a	n/a	n/a	n/a	20.1	18.0	19.8

Graph of Overall Grade 6 Provincial Achievement Test Results

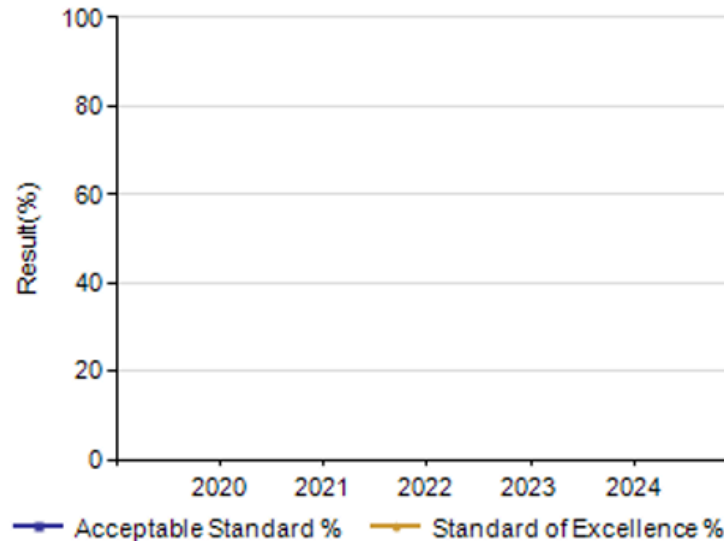


AEAM - GRADE 9 PAT RESULTS

Provincial Achievement Test Results – Grade 9 PAT By Number Enrolled Measure History

Grade 9 PAT Results By Number Enrolled Measure History													
	Brownfield Community School					Measure Evaluation			Alberta				
	2020	2021	2022	2023	2024	Achievement	Improvement	Overall	2020	2021	2022	2023	2024
N	n/a	n/a	1	4	4	n/a	n/a	n/a	n/a	n/a	53,039	57,925	60,682
Acceptable Standard %	n/a	n/a	*	*	*	*	*	*	n/a	n/a	62.9	62.6	62.5
Standard of Excellence %	n/a	n/a	*	*	*	*	*	*	n/a	n/a	16.8	15.5	15.4

Graph of Overall Grade 9 Provincial Achievement Test Results



With only four grade 9 students, we are not able to publish the number of students who reached the acceptable standard and the standard of excellence.

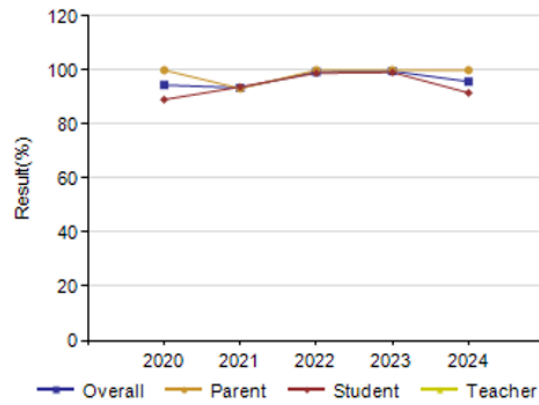
AEAM - CITIZENSHIP

Citizenship – Measure Details

Percentage of teachers, parents and students who are satisfied that students model the characteristics of active citizenship.

	School										Measure Evaluation			Authority										Province									
	2020		2021		2022		2023		2024		Achievement	Improvement	Overall	2020		2021		2022		2023		2024		2020		2021		2022		2023		2024	
	N	%	N	%	N	%	N	%	N	%				N	%	N	%	N	%	N	%	N	%	N	%	N	%	N	%	N	%	N	%
Overall	33	94.5	36	93.5	35	99.4	44	99.6	48	95.8	Very High	Declined	Good	975	83.5	825	85.7	845	83.8	943	84.3	978	85.3	264,413	83.3	230,843	83.2	249,770	81.4	257,231	80.3	265,100	79.4
Parent	12	100.0	12	93.2	14	100.0	15	100.0	16	100.0	Very High	Maintained	Excellent	158	78.5	98	82.5	109	81.9	147	78.9	139	85.2	36,891	82.4	30,905	81.4	31,689	80.4	31,869	79.4	33,217	78.7
Student	21	89.1	24	93.8	21	98.9	29	99.2	32	91.6	Very High	Declined	Good	683	76.1	605	79.3	614	77.0	657	81.0	698	78.6	193,577	73.8	169,741	74.1	187,120	72.1	193,015	71.3	199,816	69.6
Teacher	5	*	5	*	5	*	5	*	5	*	*	*	*	134	96.0	122	95.4	122	92.6	139	92.9	141	92.1	33,945	93.6	30,197	94.1	30,961	91.7	32,347	90.3	32,067	89.8

Graph of School Results



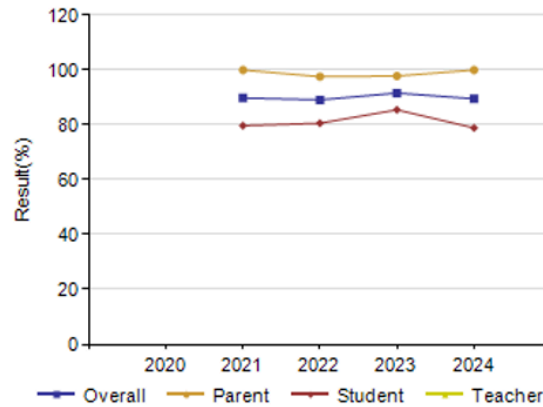
AEAM - STUDENT LEARNING ENGAGEMENT

Student Learning Engagement – Measure Details

The percentage of teachers, parents and students who agree that students are engaged in their learning at school.

	School										Measure Evaluation			Authority										Province										
	2020		2021		2022		2023		2024		Achievement			Improvement			Overall			2020		2021		2022		2023		2024						
	N	%	N	%	N	%	N	%	N	%	N	%	N	%	N	%	N	%	N	%	N	%	N	%	N	%	N	%						
Overall	n/a	n/a	36	89.8	35	89.1	44	91.6	48	89.5	n/a	Maintained	n/a	n/a	n/a	826	86.8	845	85.8	943	85.8	979	83.5	n/a	n/a	230,956	85.6	249,740	85.1	257,214	84.4	265,079	83.7	
Parent	n/a	n/a	12	100.0	14	97.6	15	97.8	16	100.0	n/a	Maintained	n/a	n/a	n/a	99	88.5	109	88.1	147	85.6	139	85.5	n/a	n/a	30,994	89.0	31,694	88.7	31,862	87.3	33,209	86.7	
Student	n/a	n/a	24	79.7	21	80.6	29	85.5	32	78.9	n/a	Maintained	n/a	n/a	n/a	605	74.8	614	72.6	657	74.6	699	69.7	n/a	n/a	169,789	71.8	187,102	71.3	193,029	70.9	199,823	69.3	
Teacher	n/a	n/a	5	*	5	*	5	*	5	*	*	*	*	*	n/a	n/a	122	97.0	122	96.7	139	97.4	141	95.5	n/a	n/a	30,173	96.0	30,944	95.5	32,323	95.1	32,047	95.1

Graph of School Results



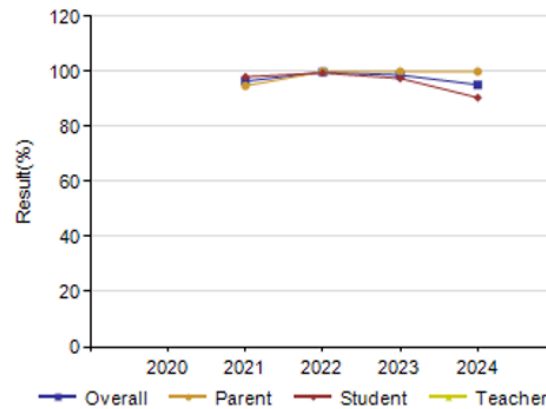
AEAM - WELCOMING, CARING, RESPECTFUL AND SAFE LEARNING ENVIRONMENTS

Welcoming, Caring, Respectful and Safe Learning Environments – Measure Details

The percentage of teachers, parents and students who agree that their learning environments are welcoming, caring, respectful and safe.

	School										Measure Evaluation			Authority										Province									
	2020		2021		2022		2023		2024		Achievement	Improvement	Overall	2020		2021		2022		2023		2024		2020		2021		2022		2023		2024	
	N	%	N	%	N	%	N	%	N	%				N	%	N	%	N	%	N	%	N	%	N	%	N	%	N	%	N	%	N	%
Overall	n/a	n/a	36	96.5	35	99.8	44	98.7	48	95.2	n/a	Declined	n/a	n/a	n/a	826	89.8	845	87.2	943	89.5	978	88.4	n/a	n/a	231,091	87.8	249,941	86.1	257,391	84.7	265,321	84.0
Parent	n/a	n/a	12	94.8	14	100.0	15	100.0	16	100.0	n/a	Maintained	n/a	n/a	n/a	99	89.5	109	84.9	147	87.5	139	89.0	n/a	n/a	30,980	88.2	31,715	86.9	31,885	85.6	33,232	85.3
Student	n/a	n/a	24	98.1	21	99.5	29	97.5	32	90.5	n/a	Declined	n/a	n/a	n/a	605	82.4	614	82.0	657	85.9	698	83.7	n/a	n/a	169,900	79.8	187,258	77.7	193,156	76.6	200,020	75.2
Teacher	n/a	n/a	5	*	5	*	5	*	5	*	*	*	*	n/a	n/a	122	97.4	122	94.7	139	95.1	141	92.6	n/a	n/a	30,211	95.3	30,968	93.6	32,350	92.0	32,069	91.6

Graph of School Results



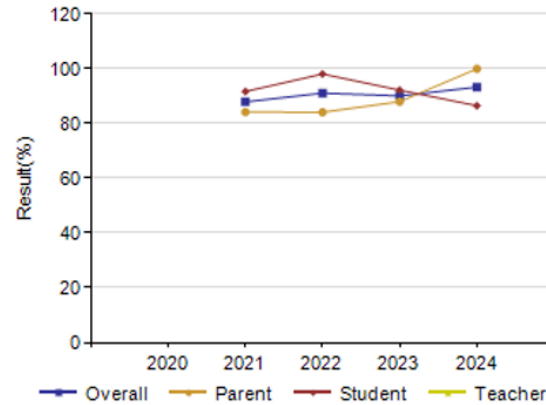
AEAM - ACCESS TO SUPPORT AND SERVICES

Access to Supports & Services – Measure Details

The percentage of teachers, parents and students who agree that students have access to the appropriate supports and services at school.

	School										Measure Evaluation			Authority										Province									
	2020		2021		2022		2023		2024		Achievement	Improvement	Overall	2020		2021		2022		2023		2024		2020		2021		2022		2023		2024	
	N	%	N	%	N	%	N	%	N	%				N	%	N	%	N	%	N	%	N	%	N	%	N	%	N	%	N	%	N	%
Overall	n/a	n/a	36	87.9	35	91.1	44	90.1	48	93.3	n/a	Maintained	n/a	n/a	n/a	826	83.6	845	83.6	942	86.8	977	84.0	n/a	n/a	230,761	82.6	249,570	81.6	256,994	80.6	264,733	79.9
Parent	n/a	n/a	12	84.2	14	84.1	15	88.0	16	100.0	n/a	Improved	n/a	n/a	n/a	99	76.8	109	77.2	146	79.9	139	83.9	n/a	n/a	30,936	78.9	31,684	77.4	31,847	75.7	33,177	75.4
Student	n/a	n/a	24	91.7	21	98.1	29	92.2	32	86.5	n/a	Declined	n/a	n/a	n/a	605	83.4	614	85.4	657	88.7	697	83.8	n/a	n/a	169,631	80.2	186,935	80.1	192,805	79.9	199,516	78.7
Teacher	n/a	n/a	5	*	5	*	5	*	5	*	*	*	*	n/a	n/a	122	90.7	122	88.3	139	91.9	141	84.3	n/a	n/a	30,194	88.7	30,951	87.3	32,342	86.2	32,040	85.6

Graph of School Results



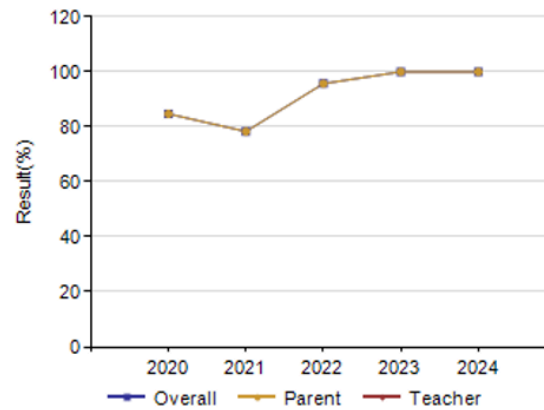
AEAM - PARENTAL INVOLVEMENT

Parental Involvement – Measure Details

Percentage of teachers and parents satisfied with parental involvement in decisions about their child's education.

	School										Measure Evaluation			Authority										Province									
	2020		2021		2022		2023		2024		Measure Evaluation			2020		2021		2022		2023		2024		2020		2021		2022		2023		2024	
	N	%	N	%	N	%	N	%	N	%	Achievement	Improvement	Overall	N	%	N	%	N	%	N	%	N	%	N	%	N	%	N	%	N	%		
Overall	12	84.7	12	78.3	14	95.7	15	100.0	16	100.0	Very High	Maintained	Excellent	292	83.4	220	79.7	230	80.4	286	83.4	280	82.2	70,377	81.8	60,919	79.5	62,412	78.8	63,935	79.1	64,949	79.5
Parent	12	84.7	12	78.3	14	95.7	15	100.0	16	100.0	Very High	Maintained	Excellent	158	71.2	98	66.2	108	71.8	147	72.0	139	78.4	36,556	73.9	30,886	72.2	31,598	72.3	31,720	72.5	33,070	74.4
Teacher	5	*	5	*	5	*	5	*	5	*	*	*	*	134	95.6	122	93.2	122	88.9	139	94.9	141	86.0	33,821	89.6	30,033	86.8	30,814	85.2	32,215	85.7	31,879	84.6

Graph of School Results



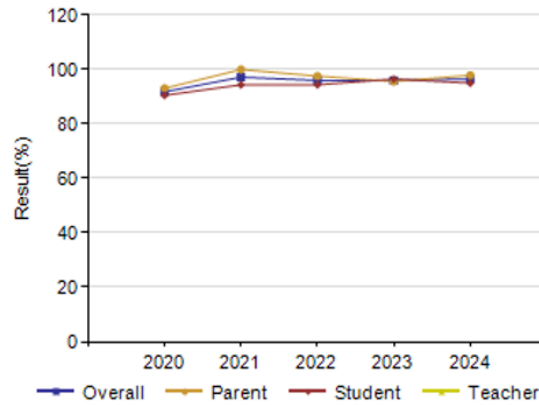
AEAM - EDUCATION QUALITY

Education Quality – Measure Details

Percentage of teachers, parents and students satisfied with the overall quality of basic education.

	School										Authority										Province												
	2020		2021		2022		2023		2024		Measure Evaluation			2020		2021		2022		2023		2024		2020		2021		2022		2023		2024	
	N	%	N	%	N	%	N	%	N	%	Achievement	Improvement	Overall	N	%	N	%	N	%	N	%	N	%	N	%	N	%	N	%	N	%		
Overall	33	91.8	36	97.2	35	96.0	44	96.0	48	96.5	Very High	Maintained	Excellent	975	88.5	824	89.9	844	89.4	943	89.8	979	89.5	264,623	90.3	230,814	89.6	249,532	89.0	257,584	88.1	265,643	87.6
Parent	12	93.1	12	100.0	14	97.6	15	95.6	16	97.9	Very High	Maintained	Excellent	158	82.9	99	86.5	109	85.8	147	84.3	139	85.5	36,907	86.7	31,024	86.7	31,728	86.1	31,890	84.4	33,250	83.8
Student	21	90.5	24	94.4	21	94.4	29	96.5	32	95.0	Very High	Maintained	Excellent	683	86.0	603	85.3	612	87.1	657	89.7	699	88.4	193,763	87.8	169,589	86.3	186,834	85.9	193,343	85.7	200,322	84.9
Teacher	5	*	5	*	5	*	5	*	5	*	*	*	*	134	96.6	122	97.9	123	95.5	139	95.4	141	94.7	33,953	96.4	30,201	95.7	30,970	95.0	32,351	94.4	32,071	93.9

Graph of School Results



SO, WHAT DOES ALL THAT MEAN?



- The survey results and PAT results are awesome!
- Our students, parents, and staff see Brownfield Community School as a safe and caring school that offers opportunities to learn, participate fully, and be supported through challenges.
- PAT results continue to be strong.
- Overall Education Quality survey responses indicate a high level of satisfaction!
- Areas for Improvement?
 - Teaching Staff are currently working on developing unit plans that support student engagement in triple and double graded classes



RESULTS FROM LOCAL MEASURES

At Brownfield Community School, we use several tools to measure student progress, particularly in Literacy and Numeracy.

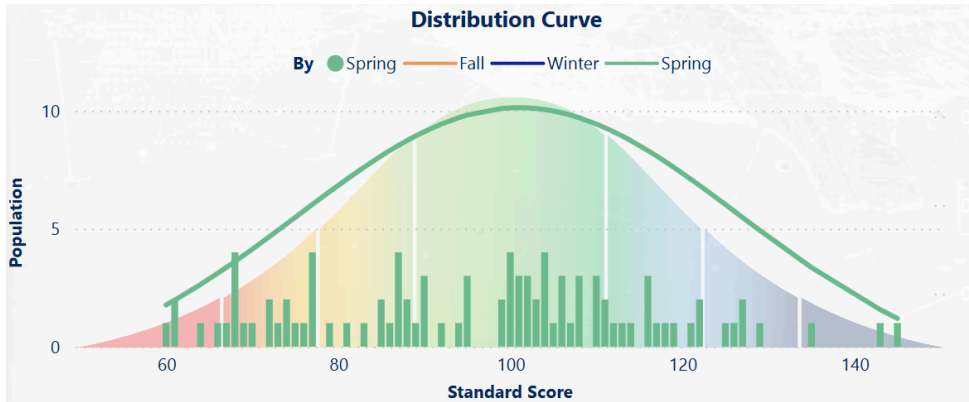
We use a literacy test called '3T', which is comprised of three tests, to help us understand each student's reading level and specific areas of need.

We use the provincial numeracy screener to assess student achievement and progress in math. Grade 5-9 students complete a screener developed by Elk Island Catholic Schools. Our staff also use the diagnostic tool on IXL Math.

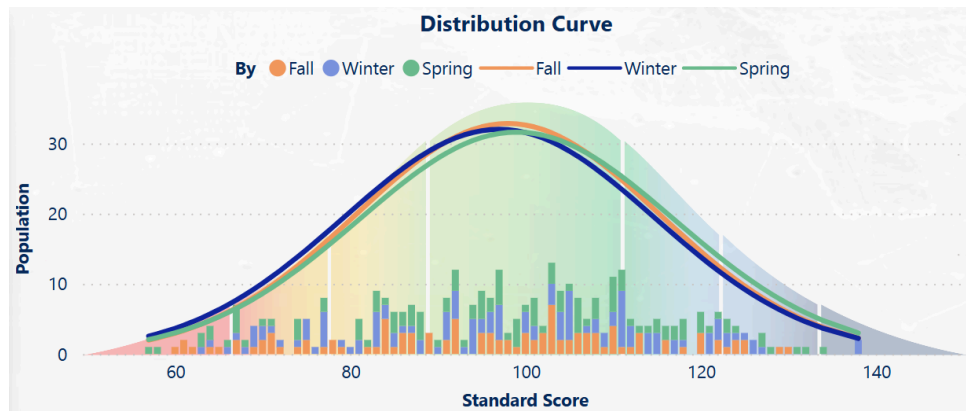
Some results from these tests are shared in the following slides.



LOCAL MEASURES - 3T

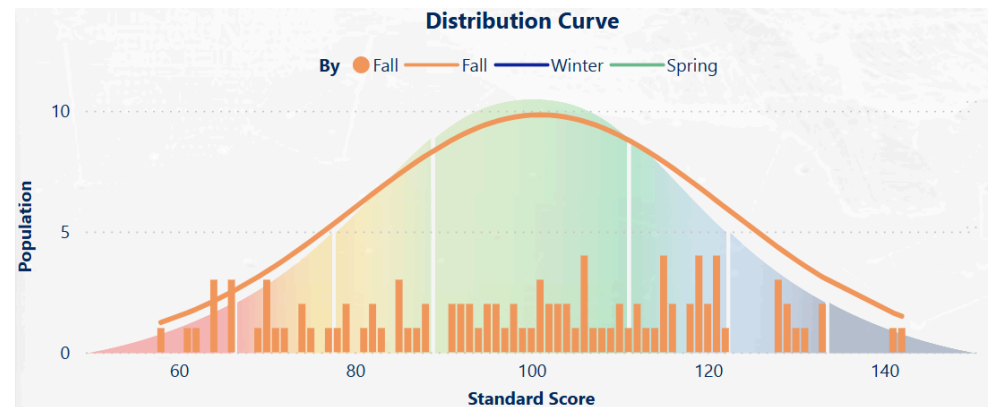


Spring 2023



**2023-2024
School Year**

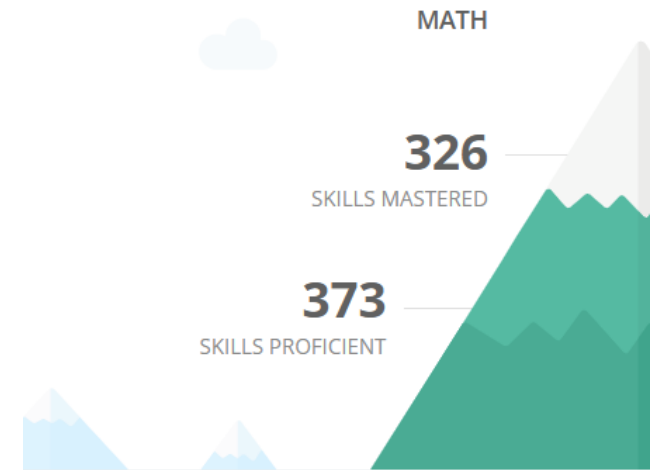
Fall 2024



LOCAL MEASURES - NUMERACY

		Total questions answered	Skills practised	Skills proficient	Skills mastered
Grade 3 3		1928	60	49	44
		No practice yet			
Grade 4 4		2528	85	55	49
		62	5	1	1
Grade 5 2		891	35	24	16
		195	8	3	2
Grade 6 6		6226	238	169	150
		613	26	15	11
Grade 7 8		1615	61	40	35
		265	5	5	2
Grade 8 5		755	29	20	19
		No practice yet			
Grade 9 6		673	26	16	13
		9	1	0	0

SKILL PROGRESS SUMMARY



Note: Provincial Numeracy Data breaks down the scores to each grade. Therefore, I cannot share that data without potentially identifying students.

EARLY YEARS LITERACY AND NUMERACY (1-3)

We use the provincial numeracy screener and our 3T assessment to identify “at-risk” learners in grades 1-3. We then provide support and follow-up to ensure these students are making progress.

In 2023-2024, we identified “at-risk” learners in grades 1-3 in numeracy. We provided numeracy support in class and were pleased to see significant improvement during the year.

Our 3T testing showed “at-risk” learners in grades 1-3 in literacy. Again, literacy interventions helped support student improvement throughout the year.

Unfortunately, we cannot share the specific data due to our small numbers as we do not want to identify the students.

LEARNING DISRUPTION

Across the province, students experienced significant disruption to learning and have shown significant learning loss. Learning loss was previously associated with regression students experienced over summer break, but it was amplified across the province due to the pandemic.

Students at Brownfield Community School experienced the learning loss at a different rate than the province.

Testing in the 2021-2022 school year identified a few students with areas of concern. We tracked their progress and continued to do so in 2022-2023 to ensure appropriate supports were available if needed.

Our testing shows that student progression is on par with that of previous school years. This is a testament to the work of families and teachers in supporting our students throughout the pandemic and beyond.

SUPPORTING FIRST NATIONS, METIS AND INUIT EDUCATION

Brownfield Community School will ensure all students are knowledgeable, understand, and respectful of the rich diversity of First Nation, Metis, and Inuit languages, histories, the importance of Treaties, and the legacy of residential schools.

Brownfield Community School will continue to participate in Orange Shirt Day, including inviting guests from the area to enrich our learning.

We demonstrate our commitment to the Truth and Reconciliation Commission Recommendations by using a Land Acknowledgment at the beginning of school events and including relevant curricular connections for all students.

STRATEGIC ENGAGEMENT

HOW DID WE DECIDE ON OUR FOCUS AREAS?

- Family, Student and Teacher Feedback on Alberta Education's Assurance Survey
- Input from School Council
- Clearview Public School has the same focus areas
- We want to continue excelling in Literacy and Numeracy
- We want our students to love coming to school!



STAFF PD
PLAN TO SUPPORT
OUR FOCUS
AREAS



QUESTIONS, CONCERNS, COMMMENTS?

Jason Faber - Principal
jfaber@clearview.ab.ca
cell: 587-282-0944
school: 403-578-2247